

# **PCIe 5 Ports SuperSpeed USB 10Gbps Host Adapter**

**User Manual**

**Ver. 1.00**

**All brand names and trademarks are properties of their  
respective owners.**

# Contents:

Chapter 1: Introduction.....	3
1.1 Features.....	3
1.2 System Requirements .....	4
1.3 Package Contents.....	4
Chapter 2: Getting Started .....	4
2.1 Hardware Installation .....	4
2.2 Driver Installation For Windows .....	5
2.3 Hardware Verify For Windows.....	6
2.4 Windows Driver Uninstall.....	6

# Chapter 1: Introduction

## ***1.1 Features***

- Support 5 ports of USB3.2 Gen 2.
- Support PCI Express Gen-III x2.
- Up to 10Gbps Bandwidth Performance with Low Latency.
- Support USB Battery Charging 1.2 (Only Type-A).
- Support Multiple INs.
- Compliant with UASP Revision 1.0.
- Support the following speed data rates:
  - 1.5Mbps / 12Mbps / 480Mbps / 5Gbps / 10Gbps.
- Connect to SATA power connector to PSU when required power exceeds 75W. However, the maximum power output from all 5 ports altogether is no more than 67.5W. Therefore, it is always enough with the power provided from PCIe slot.

## ***1.2 System Requirements***

- Windows 7/8.x/10 (32/64 bit);
- Mac OS 10.10 or later;
- Linux 3.5 or later;
- One available PCI Express x4, x8 or x16 slots;

## ***1.3 Package Contents***

- 1 x PCIe 5 Ports SuperSpeed USB 10Gbps Host Adapter.
- 1 x User Manual.
- 1 x Low Profile Bracket (for models with 4 external ports only).

Note: Contents may vary depending on models.

# Chapter 2: Getting Started

## ***2.1 Hardware Installation***

1. Turn off the power to your computer.
2. Unplug the power cord and remove your computer's cover.
3. Remove the slot bracket from an available PCI-Express x4 (x8, x16) slot.

4. To install the card, carefully align the card's bus connector with the selected PCIe slot on the motherboard. Push the board down firmly.
5. Replace the slot bracket's holding screw to secure the card.
6. Secure the computer cover and reconnect the power cord.

## ***2.2 Driver Installation for Windows***

Follow below instructions to download the driver manually.

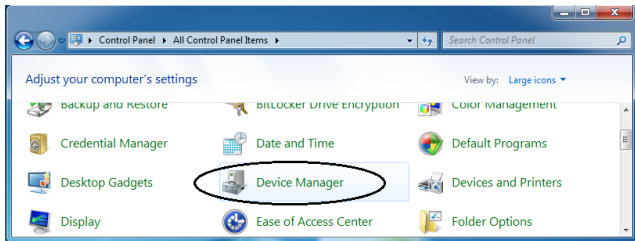
1. Navigate to [www.sunrichtech.com.hk](http://www.sunrichtech.com.hk) and enter ordering code (U-2300, U-2310, U-2320, U-2330 or U-2340) in the search field.
2. Click the "Manual & Download" tab.
3. Click "Download Drivers" and select the driver that matches system OS, download will begin.
4. Extract the content of the downloaded file into a folder for driver installation.
5. Run "setup.exe" and follow the desktop prompts to install.

**Note: PCIe 5 Ports SuperSpeed USB 10Gbps Host Adapter's driver is embedded into Windows 8.x/10, Mac and Linux OS. The driver can be installed into Windows 8.x/10, Mac and Linux OS automatically.**

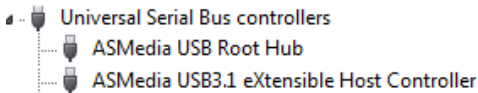
## 2.3 Hardware Verify for Windows

1. Click “Device Manager” in Windows Control Panel.

**Start > Control Panel > Device Manager.**



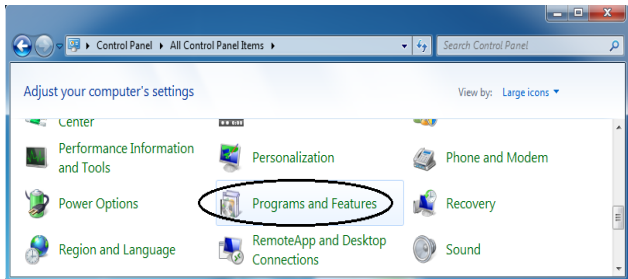
2. Expand “Universal Serial Bus controllers” item, and you can read “ASMedia USB3.1 eXtensible Host Controller” in the Device Manager.



## 2.4 Windows Driver Uninstall

1. Click "Programs and Features" in Windows Control Panel.

**Start > Control Panel > Programs and Features.**



2. In the page of "Uninstall or change a program", double click **“Asmedia USB Host Controller Driver”** to process driver uninstallation procedure.

