

# **Dual Channel 4-Port USB 3.1 PCI Express Card**

## **User Manual**

**Ver. 1.00**

**All brand names and trademarks are properties of their  
respective owners.**

# Contents:

Chapter 1: Introduction.....	3
1.1 Features.....	3
1.2 System Requirements .....	4
1.3 Package Contents.....	4
Chapter 2: Getting Started .....	4
2.1 Hardware Installation .....	4
2.2 Driver Installation For Windows .....	5
2.3 Hardware Verify For Windows.....	7
2.4 Windows Driver Uninstall .....	8

# Chapter 1: Introduction

## ***1.1 Features***

- PCI-Express 2.0x4
- Provides four SuperSpeed+ (10Gb/s) USB 3.1 Type-A ports to support total transfer bandwidth up to 20Gb/s
- Complaint with Intel's eXtensible Host Controller Interface (xHCI) Specification Revision 1.0
- Supports simultaneous operation of multiple USB 3.1, USB 2.0 and USB 1.1 devices
- Supports the following speed data rates as follows:  
Low-speed (1.5Mbps) / Full-speed (12Mbps) / High-speed (480Mbps) / Super-speed (5Gbps)
- Supports 4 downstream ports for all speeds
- Built-in 4-pin power connector for receiving extra power supply from system
- Hot-swapping feature allows you to connect/disconnect devices without powering down the system

## ***1.2 System Requirements***

- Windows 7/8.x/10 (32/64 bit); Mac OS X 10.10.5 or higher;  
Linux Kernel 4.6 or later
- PCI Express x4, x8 or x16 slots

## ***1.3 Package Contents***

- 1 x Dual Channel 4-Port USB 3.1 PCI Express Card
- 1 x Driver CD
- 1 x User Manual

Note: Contents may vary depending on country/market.

# **Chapter 2: Getting Started**

## ***2.1 Hardware Installation***

1. Turn off the power to your computer.
2. Unplug the power cord and remove your computer's cover.
3. Remove the slot bracket from an available PCI-Express x4 (x8, x16) slot.

4. To install the card, carefully align the card's bus connector with the selected PCIe slot on the motherboard. Push the board down firmly.
5. Replace the slot bracket's holding screw to secure the card.
6. Secure the computer cover and reconnect the power cord.

## ***2.2 Driver Installation For Windows***

1. Insert the provided CD into your disk drive. The CD-ROM will start automatically. The following screen will show up and please click "**Install Driver**".



*\*Note: Actual image may vary*

**Note:** If the install program doesn't run automatically, please locate and double-click on the **Autorun.exe** file in the CD to

launch the install program.

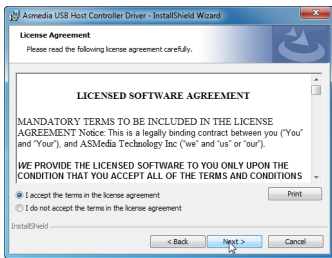
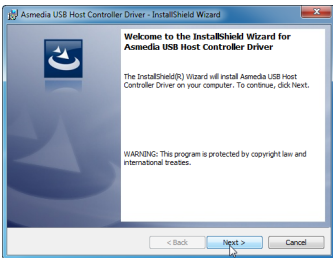
2. Please click “ASM1142” to start the installation.



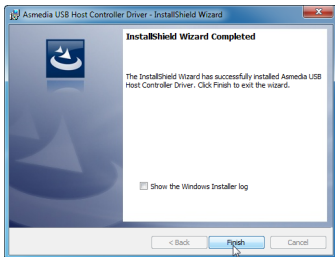
\*Note: Actual image may vary

3. Click “Next” to continue.

Please check accept license agreement box, and click “Next” to continue.



4. Click “Finish” to end of the driver installation steps.

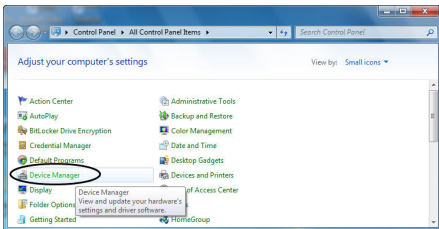


**Note: Dual Channel 4-Port USB 3.1 PCI Express Card’s driver was embedded into Windows 8.x/10 OS. That’s, the driver can be installed into Windows 8.x/10 automatically.**

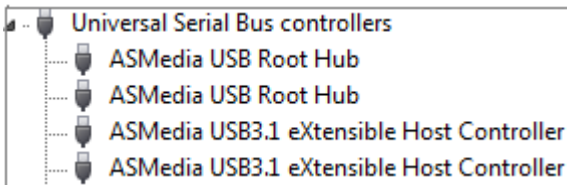
## ***2.3 Hardware Verify For Windows***

1. Click on the “**Device Manager**” tab in the Windows Control Panel.

**Start > Control Panel > Device Manager**



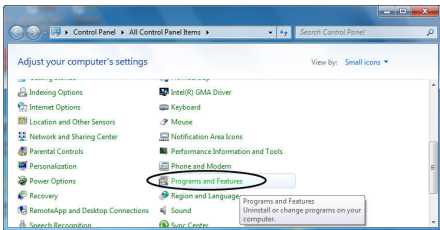
2. Entry “**Universal Serial Bus controllers**” item, and you can read “**ASMedia USB3.1 eXtensible Host Controller**” and “**ASMedia USB3.1 eXtensible USB 3.0 Root Hub**” in the Device Manager.



## ***2.4 Windows Driver Uninstall***

1. Click on the “**Programs and Features**” tab in the Windows Control Panel.  
**Start > Control Panel > Programs and Features**





2. Entry “Uninstall or change a program” page, and double click “Asmedia USB Host Controller Driver” to process driver uninstallation procedure.

