

PCIe USB 3.1 Gen1 Host Adapter

User Manual

Ver. 1.00

**All brand names and trademarks are properties of their
respective owners.**

Contents:

Chapter 1: Introduction.....	3
1.1 Features.....	3
1.3 System Requirements	4
1.4 Package Contents.....	4
Chapter 2: Getting Started	4
2.1 Hardware Installation	4
2.2 Driver Installation.....	5
2.3 Hardware Verify.....	8
2.4 Driver Uninstall	9

Chapter 1: Introduction

1.1 Features

- Fully compliant with PCI Express Base Specification Revision 2.0
- Single-lane (x1) PCI Express throughput rates up to 5 Gbps
- Compliant with Universal Serial Bus 3.0 specification Revision 1.0
- Supports simultaneous operation of multiple USB 3.0, USB 2.0 and USB 1.1 devices
- Supports the following speed data rates as follows:
Low-speed (1.5Mbps) / Full-speed (12Mbps) / High-speed (480Mbps) / Super-speed (5Gbps)
- Compliant with Intel's eXtensible Host Controller Interface (xHCI) Specification Revision 0.96
- Built-in over current protection on each USB port
- Add up two USB 3.0 Type-A ports (model dependent) / two USB 3.0 Type-C ports (model dependent)
- Built-in 4-pin power connector for receiving extra power supply

from system

- Hot-swapping feature allows you to connect/disconnect devices without powering down the system

1.3 System Requirements

- Windows® 7/8/8.1/10 (32/64 bit)
- One available PCI Express slot (x1, x4, x8, or x16)

1.4 Package Contents

- 1 x PCIe USB 3.1 Gen1 Host Adapter
- 1 x Driver CD
- 1 x User Manual

Note: Contents may vary depending on country/market.

Chapter 2: Getting Started

2.1 Hardware Installation

1. Turn off the power to your computer.

2. Unplug the power cord and remove your computer's cover.
3. Remove the slot bracket from an available PCIe slot (x1, x4, x8, or x16)
4. To install the card, carefully align the card's bus connector with the selected PCIe slot on the motherboard. Push the board down firmly.
5. Replace the slot bracket's holding screw to secure the card.
6. Secure the computer cover and reconnect the power cord.

2.2 Driver Installation

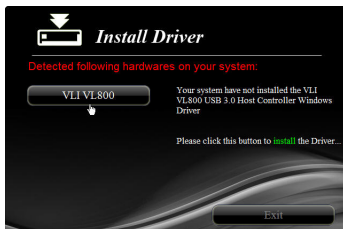
1. Insert the provided CD into your disk drive. The CD-ROM will start automatically. The following screen will show up and please click "**Install Driver**".



*Note: Actual image may vary

Note: If the install program doesn't run automatically, please locate and double-click on the **Autorun.exe** file in the CD to launch the install program.

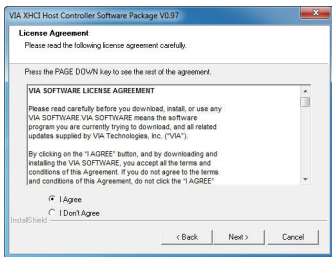
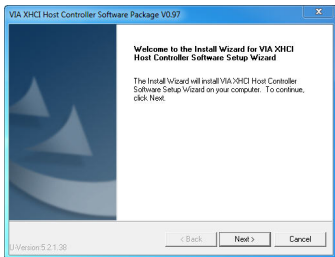
2. Please click “**VLI VL800**” to start the installation.



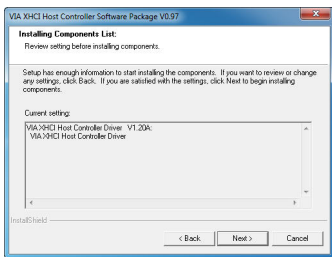
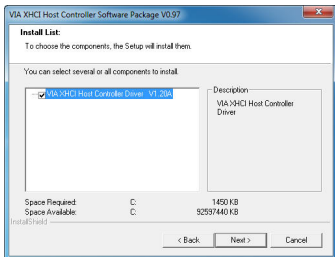
*Note: Actual image may vary

3. Click “**Next**” to continue.

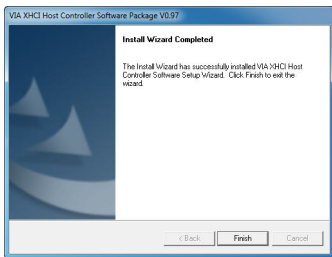
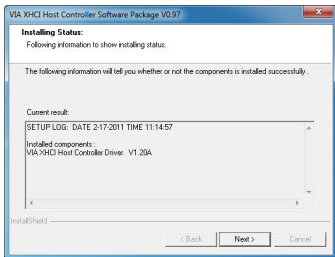
Please check accept license agreement box, and click “**Next**” to continue.



4. Select **“VIA XHCI Host Controller Driver”** and press **“Next”**. Please review settings before install the driver, and click **“Next”** to continue.



5. Click **“Next”** to continue.
Click **“Finish”** to end of the driver installations steps.



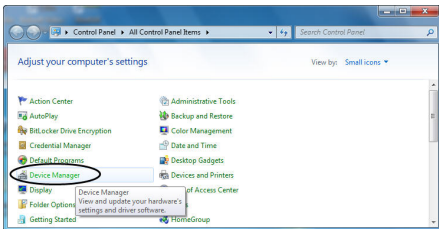
6. After driver installation is complete, you must restart your computer.

Note: The PCIe USB 3.1 Gen1 Host Adapter's driver was embedded into Windows 8/8.1/10 OS. That's, the driver can be installed into Windows 8/8.1/10 automatically.

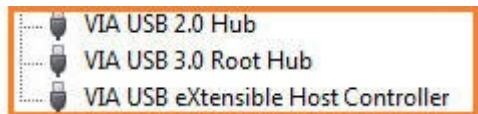
2.3 Hardware Verify

1. Click on the “**Device Manager**” tab in the Windows Control Panel.

Start > Control Panel > Device Manager



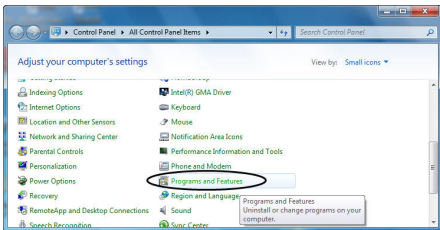
2. Entry “**Universal Serial Bus controllers**” item, and you can read “**VIA USB 2.0 Hub**”, “**VIA USB 3.0 Root Hub**” and “**VIA USB eXtensible Host Controller**” in the Device Manager.



2.4 Driver Uninstall

1. Click on the “**Programs and Features**” tab in the Windows Control Panel.

Start > Control Panel > Programs and Features



2. Entry “Uninstall or change a program” page, and double click “VIA Platform Device Manager” to process driver uninstallation procedure.

