

PCIe USB 3.1 Gen2 Host Adapter

User Manual

Ver. 1.00

**All brand names and trademarks are properties of their
respective owners.**

Contents:

Chapter 1: Introduction	3
1.1 Features.....	3
1.3 System Requirements	3
1.4 Package Contents.....	4
Chapter 2: Getting Started	4
2.1 Hardware Installation	4
2.2 Driver Installation.....	5
2.3 Hardware Verify.....	7
2.4 Driver Uninstall	8

Chapter 1: Introduction

1.1 Features

- Compliant with PCI Express Base 3.0 Specification
- Support PCI Express Gen2 x2 or Gen3 x1
- Compliant with Universal Serial Bus 3.1 Specification Revision 1.0
- Compliant with Universal Serial Bus Specification Revision 2.0
- Backward to compatible with USB 3.0/2.0/1.1 interface
- Up to 10 Gbps bandwidth performance with low latency
- Support two Type-C port of USB 3.1
- Compliant with eXtensible Host Controller Interface (xHCI) Specification Revision 1.1
- Built-in over current protection on each USB port

1.3 System Requirements

- Windows® 7/8/8.1/10 (32/64 bit)
- One available PCI Express slot (x4, x8, or x16)

1.4 Package Contents

- 1 x PCIe USB 3.1 Gen2 Host Adapter
- 1 x User Manual
- 1 x Driver CD
- 1 x Low Profile Bracket

Chapter 2: Getting Started

2.1 Hardware Installation

1. Turn off the power to your computer.
2. Unplug the power cord and remove your computer's cover.
3. Remove the slot bracket from an available PCI Express slot (x4, x8, or x16).
4. To install the card, carefully align the card's bus connector with the selected PCIe slot on the motherboard. Push the board down firmly.
5. Replace the slot bracket's holding screw to secure the card.
6. Secure the computer cover and reconnect the power cord.

2.2 Driver Installation

1. Insert the provided CD into your disk drive. The CD-ROM will start automatically. The following screen will show up and please click “**Install Driver**”.



*Note: Actual image may vary

Note: If the install program doesn't run automatically, please locate and double-click on the **Autorun.exe** file in the CD to launch the install program.

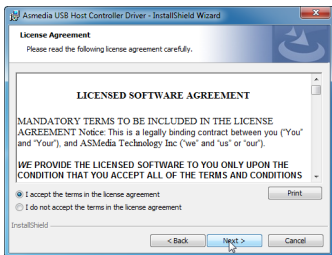
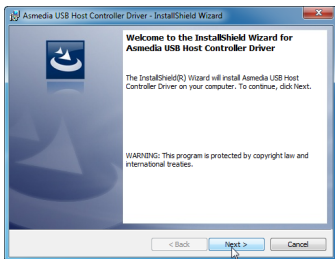
2. Please click “**ASM1142**” to start the installation.



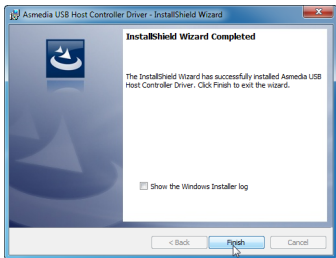
*Note: Actual image may vary

3. Click “**Next**” to continue.

Please check accept license agreement box, and click “**Next**” to continue.



4. Click “**Finish**” to end of the driver installation steps.

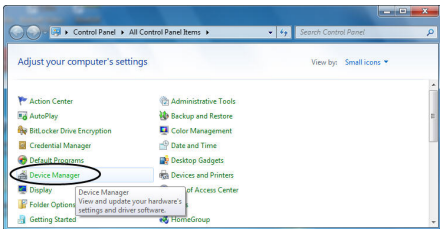


Note: The PCIe USB 3.1 Gen2 Host Adapter's driver was embedded into Windows 8/8.1/10 OS. That's, the driver can be installed into Windows 8/8.1/10 automatically.

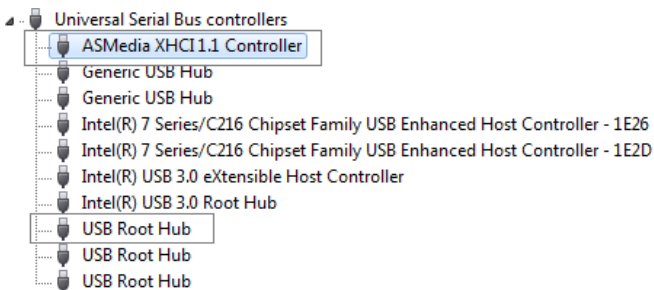
2.3 Hardware Verify

1. Click on the **“Device Manager”** tab in the Windows Control Panel.

Start > Control Panel > Device Manager



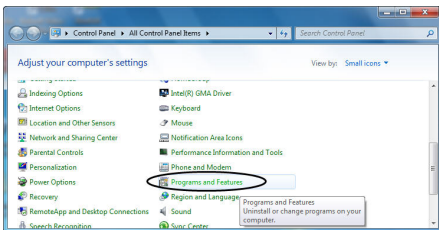
2. Entry “**Universal Serial Bus controllers**” item, and you can read “**ASMedia XHCI 1.1 Controller**” and “**USB Root Hub**” in the Device Manager.



2.4 Driver Uninstall

1. Click on the “**Programs and Features**” tab in the Windows Control Panel.

Start > Control Panel > Programs and Features



2. Entry “Uninstall or change a program” page, and double click “Asmedia USB 3.0 Host Controller Driver” to process driver uninstallation procedure.

